

THE CHERRY JUICE

VE Exams

6/15/2016 - Prescott, MI
7:00pm (W5YI VEC)
Location: Mills Township Hall
2441 Greenwood Rd
Prescott, MI 48756-9108
Contact: HRichard D. Beattie
(989) 873-6909
rbeattie6909@charter.net
Walk-Ins Allowed

6/18/2016 - Midland, MI
10:00am (ARRL VEC)
Location: Salvation Army Building
330 Waldo Avenue
Midland, MI 48640
Contact: Dennis K. Klipa
(989) 948-5427
n8erf@arrl.net
Walk-Ins Allowed

Ham Classes

The CARC continues to offer General-class upgrade classes on Wednesday Evenings at Glen K8SGZ's office. It is never too late to attend! You may have missed some material, but you can still attend the classes as a study aid for an upcoming VE exam!

Hamfests / Swaps

Midland Hamfest
Sponsor: Midland ARC
DOORS OPEN 8AM

Salvation Army Building
330 Waldo Avenue
Midland, MI 48640

Web: <http://w8kea.org>
Talk-In: 147.00+

Public Contact:
Pat Russell , W8PMR
4451 East Wise Road
Freeland, MI 48623
989-832 2924
chuck.cribley@live.com

JUNE 28TH - GENERAL MEETING

Tuesday - 7pm

The Salvation Army - Basement Meeting Hall
1239 Barlow St., Traverse City, MI 49686
(at the intersection of: Barlow st. & Boon st.)

Program: WPBN-WGTU overview by Jim Marco, W8JGP

JUNE 25-26, 2016:



**HAM RADIO OPERATOR
ON THE AIR**

IN THIS ISSUE:

- 1** **VE, Classes, Hamfests, Features**
- 2** **June 28 Program: WPBN-WGTU overview**
- 2** **NPOTA: Planning Stage**
- 3** **Silent Key**
- 3** **Superflex/Heliex: last call!**
- 4** **Field Day is coming!**
- 6** **Have You Been SAGging Lately?**
- 7** **CARC Board Meeting Minutes 5/3/2016**
- 9** **CARC Information**

WPBN-WGTU overview by Jim Marco, W8JGP

Joe Erlewein, N8CN

Our May program "Contesting 101" was presented by Greg Surma KG8L, and although I was not able to attend the meeting to see it in person (Daddy duties..) I was able to catch the playback of the video posted on the club website! If you haven't yet watched it, please do! Thanks to Greg for putting together such a fun, interesting and engaging presentation!

For our June 28 Meeting Program we have the pleasure of hosting Jim Marco, W8JGP. Jim is the Chief Engineer for WPBN-WGTU, which some of you may recognize as "TV 7&4" up on the hill just off M-72.

WPBN-WGTU is an ABC Television affiliate owned and operated by Sinclair Broadcasting Group, Inc. which is one of the largest and most diversified television broadcasting companies in the US today.

WPBN-WGTU has graciously hosted the Cherryland Amateur Radio Club's 2-meter and 70-centimeter repeaters for many years, starting in early 1980.

This (hosting our repeaters) is just a drop in the proverbial bucket of the different outreach programs and public services that Sinclair and WPBN-WGTU offer to the Traverse City and surrounding communities.

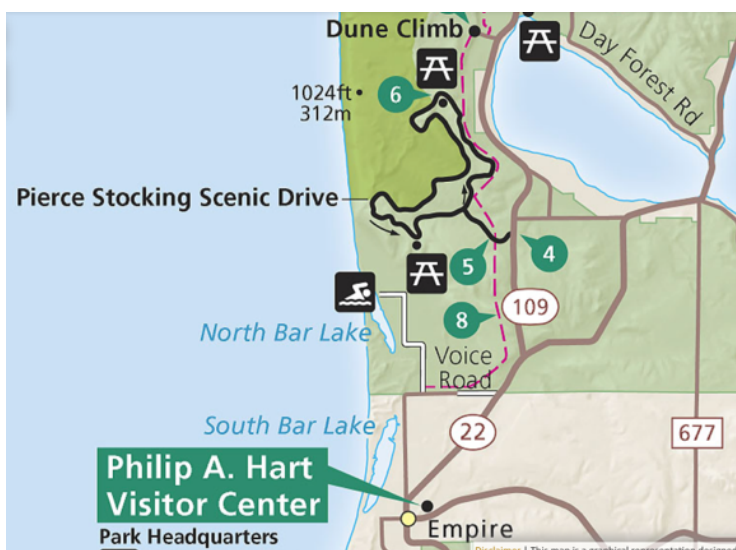
Jim will offer a presentation on these programs and services, present an overview of the station and some of its history, and will also share some of the juicy technical details behind running a flagship broadcasting station in the area. We hope you can attend, this program is sure to be fascinating! See you there!

73 de Joe N8CN

National Parks On The Air! (NPOTA)

CARC Planned Activation: Aug 20-21,

The CARC has an application on file with the National Park Service for August 20 and 21. The CARC plans to activate the Sleeping Bear National Lakeshore area known as "Pierce Stocking." The Pierce Stocking Scenic Drive area is just West of the south side of Little Glen lake, North of Empire and South of the Sleeping Bear Dunes Dune Climb area.



There will be additional information on the CARC's NPOTA planned activation, so stay tuned to the website and future issues of the Cherry Juice - we will be sending out additional details as plans develop.

We will send out a formal list of things to bring, but mostly the club will provide the radio gear and do the organization - just show up and help operate and have some fun, and take some pictures, and enjoy the area!

Art Dundon, N8HKQ

CARC Silent Key - 2016.05.23

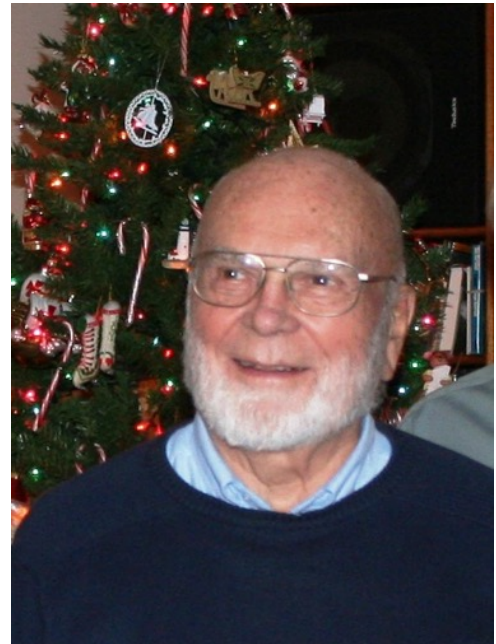
We were saddened to learn of the passing of Art Dundon N8HKQ on May 23, 2016. He was 95.

Art's son Tom (KE8KX) became a silent key Nov 13, 2013. Tom and Art were both active hams and friendly, fun people.

Art and Tom were both long-time supporters of the CARC and could often be heard on the radio and seen at CARC activities, especially assisting with VE exam administration.

A gathering will be held at the Elks Club on Friday, June 10, 2016 from noon to 3 p.m. A complete obituary will appear in a later edition of the Record-Eagle.

Arrangements are by Reynolds-Jonkhoff Funeral Home.

**Hardline Available**

New 1/2" from Northern Tower

Northern Tower is liquidating their supply of 1/2" Andrews Hardline and 1/2" Andrews Superflex. We worked with Northern Tower on our repeater antenna and feed line replacement. They have about 5000' of 1/2" Hardline and about 900' of 1/2" Superflex available priced at \$1 per foot.

This could be a great low-loss solution for your VHF/UHF antennas on your tower. (at this price, it's hard to not want to replace all of your existing coaxial feeds!)

Contact John Gordon at Northern Tower - 231.313.1133



Get Ready For CARC Field Day 2016!

Ernie Abel, K8RCT

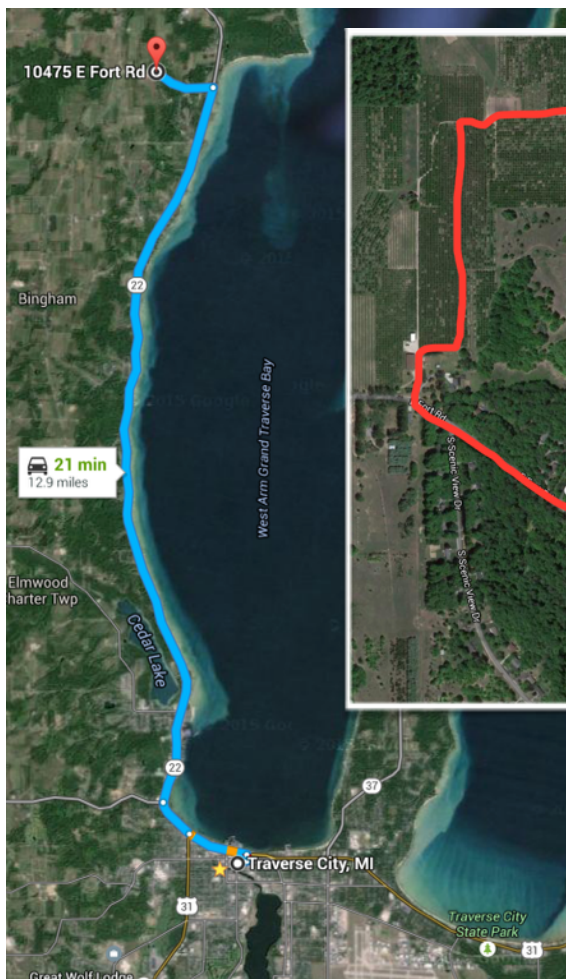
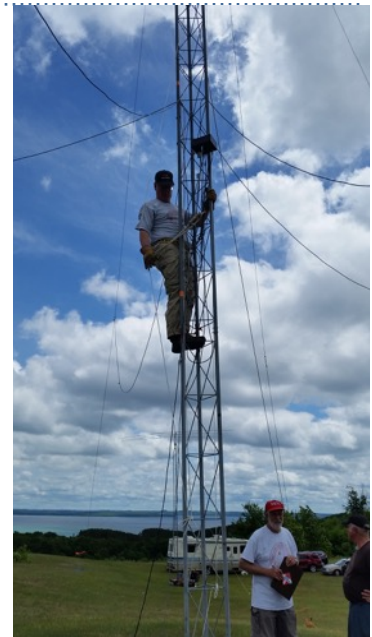
Grab your bug-dope and sun- screen because the Cherryland Amateur Radio Club is getting ready for another great Field Day!. This year Field Day will be held on June 25 and 26 at the Kiessel orchard at 10495 Fort Road in Leelanau County. The event runs from 1800 UTC (2 PM EST) UTC Saturday and ending at 2100 UTC (4 PM EST) Sunday.

We will be setting up on Friday, June 24th so all hands on deck to help during the set-up of the major components of the event. There are tents to erect, antennas to be strung and radios tested. This is almost as much fun as the actual operating event. So pack up your tools, extra wire and come and help us set-up the equipment.

Last year we had a group of club members stay overnight at the Field Day site. I understand they had a WONDERFUL time. If you plan to stay overnight, bring your sleeping bag and beverage of choice!

This year the CARC is hosting the ARRL Field Day at the usual location – the Kiessel Farm located on Fort Road. Fort Road is just about halfway between Suttons Bay and Traverse City. Just hang a left onto Fort Road, just past the Red Lion Motor Lodge.

Here are some maps...



This year there will be a "Friday Night Special Dinner" to celebrate the role that Hams' Families play in supporting our interests in the hobby. There will be a special entree (I'm told Lobster or similar) and the cost per head will be \$20. This is just for Friday's dinner. All three meals Saturday are provided by the club. Drinks, snacks and Sunday Food will be up to you!

Get Ready For CARC Field Day 2016! (continued)



Saturday's food will be provided by the CARC and prepared by our own chief Glen Johnson. Yummy! No one walked away hungry last year and the corned beef and cabbage for lunch was my favorite meal. I guarantee that you will love Glen's cooking!

We do have a small problem that we need to solve this year. Glen plans meals for the folks that sign up to eat at the site. Last year we had many more hams show up for meals that we had planned for. Luckily, Glen had the foresight to prepare extra food for the unexpected guests.



This year we will be emailing out a meal sign-up sheet to all our members. Please fill out the sign-up form and email it back so we can get a better handle on the number of people who will be dining with us.

We do need a person to operate the GOTA (Get on the Air) station for our new hams to operate. If you are interested in taking charge of the GOTA station, please let me know. It's worth extra bonus points if we have new hams get on the air using the GOTA station. Please let me know if you would like to be the GOTA Coach....heck, we'll even call you "coach"!

I'll be seeing you out at Field Day...you won't want to miss it!

73- Ernie, K8RCT



Have you been SAGging lately?

Ernie Abel, K8RCT



Well, I know several of us spent last Saturday SAGging at the Interlochen Bikes for Books event. There were four different bike routes for the participants and hams from the Cherryland ARC patrolled the routes on the look-out for problems such as lost bikers, breakdowns or any other problems that might happen during the event.

We used the club's 146.86 Mhz repeater to keep in contact. One of the routes was over 30 miles long and extended all the way to Crystal Mountain!. One lucky ham, Jim Palmer (K8OJP) was the lucky ham who got that route!



Participating in the event was Chuck (W8SGR), Ernie (K8RCT) and Jim (K8OJP).

Oh yea, you asked "What's a SAG?" The term sag means the "Safety and Guidance" patrol.

73- Ernie, K8RCT



CARC Board Meeting Agenda / Minutes - May 3, 2016

Joe Schnaidt, KC8RLU

Members Present: K8RCT, N8CN, N8WK, KC8RLU, W8SGR, KJ4KFJ, W8VPC

Others Present: KC8ZAP, K8ZRT, K8RUS, AA8SN, ?, ?

- 1) Call to order
- 2) Treasurer's Report – Got an increase from donation from \$200 (Glen K8SGZ (Battery Backup for 86)) and \$2,500 (Biederman Foundation); Bills paid, owe Ernie \$1,300 ~\$4,700 left in the bank (\$3,400 if a go on UHF System Fusion*). Tower & climb paid in full.
- 3) Repeater Report -
 - a) WPBN-WGTU requirements to have on file with Jim Marco at WPBN-WGTU:
 - i) List of activities that the club does in the community
 - ii) Copy of Constitution, Charter, Bylaws – Articles of Organization (LARA)
 - iii) Copy of 501-c3
 - iv) Copy of insurance – (Larkin?)
 - b) Backup Power – WCMU looking at new backup technology and offering to provide a 12 -volt feed. Russ offering to donate APC 10000VA UPS; just need to replace batteries and not rack mounted. Club still in the research & planning stages.
 - c) Polyphasers - installed
 - d) Controller -
 - e) UHF – *Motion by N8CN for discussion to add a System Fusion UHF Repeater (\$700); cogitate for a month.
- 4) Committee Reports
 - a) Field Day committee – June 25th & 26th, Set up Friday (24th); table until K8SGZ gets back.
 - b) SATERN station committee – Mike (W8VPC), needs replacement tower, feed-line, bolts, VHF/UHF antennas, need to find out cost for a cherry picker, install lightning arrestors (polyphasers). Work Bee - TBD
 - c) Swap-N-Shop 2017 committee – No Report.
- 5) Status of scrapping old cable not purchased – Ernie to facilitate.
- 6) Status of Farm Cleanup project, old campers, etc. – N8CN to take pictures for Craigslist
- 7) MIQP re-cap – 54 contacts, operated at SA for 1.5 hrs, moved to K8SGZ's office for remainder of contest.
- 8) 2016 Goals
 - a) Classes - in progress!
 - b) Clean up the Project Room - status?
 - c) SATERN station improvement - committee in progress.
 - d) SATERN VHF antenna replacement. status?
 - e) Public Service Events - Ernie has details
 - f) NPOTA - status on our planned effort? Ernie to organize?
 - g) 2 Fox Hunts - schedule them! – Decision to have just 1 this year.
 - h) Salvation Army Bell Ringing - TBD
- 9) Club Program Planning:
 - a) April: Recap of April Skywarn Training
 - b) May 24: Greg Suma – Bay Area DXers (QRP)
 - c) June 28: Jim Marco: WPBN-WGTU / UpNorthLive
 - d) September 26: ?Jack & Cristina Staats : 2 DXpeditions on the island of Montserrat
- 10) Review & Approval of Minutes – Motioned & 2nded; Approved.
- 11) Adjourn!
- 12) Mad River requesting CARC donation for plaque 2016 MI-QP
- 13) SA request by custodian to get fire extinguisher refreshed; hasn't been done in a while.
- 14) Skywarn Net - TBD

CHERRYLAND AMATEUR RADIO CLUB - INFORMATION

Meetings:

Club Meetings:

The official CARC Club Meeting occurs on the Fourth Tuesday of each month. Anyone is welcome.

Board Meetings:

The CARC Board meets on the First Tuesday of each month. Board meetings are open all.

Project Night:

The CARC meets for a "project night" on all other Tuesday nights at 7pm. Anyone is welcome to come and use the tools, parts, resources, and "elmers" in the project room / SATERN station.

Meetings occur at the Salvation Army building on Barlow St. (at Boon st.) in Traverse City.

The project room is on the basement level.

Membership:

To become a member of the CARC:

1. Fill out a membership form.

You may fill out a form at any meeting, fill out the form online via the website, or you can email cherrylandarc@gmail.com to receive a form via email.

2. Submit dues with your form.

Dues are \$24 per year and are due January 1 each year or with your membership form submission. (pro-rated)
(Family Memberships available for \$26)

Club Repeaters

W8TCM/R

146.86- (PL 114.8)

W8ZTB Memorial Repeater

W8TCM/R

442.50- (PL 114.8)

W8NGH Memorial Repeater

Club Officers

President

Ernest Abel, K8RCT

Vice President

Joe Erlewein, N8CN

Secretary

Joe Schnaidt, KC8RLU

Treasurer

Ward Kuhn, N8WK

Directors

Chuck Mellberg, W8SGR

Mike Cleary, W8VPC

Dave Hanchett, KJ4KFJ

Cherry Juice Editor

Joe N8CN

Club Nets

MESH NET

Monday Evening Social Hour

Each Monday, 8pm

146.86- (PL 114.8)

SMASH NET

Sunday Morning Amateur Social Hour

Each Sunday, 9am

3.935 MHz

That's it for the May edition of the Cherry Juice!

As always, if you have any suggestions or comments, I'm all ears!

joe@n8cn.org

N8CN

73, Joe

<SK>